

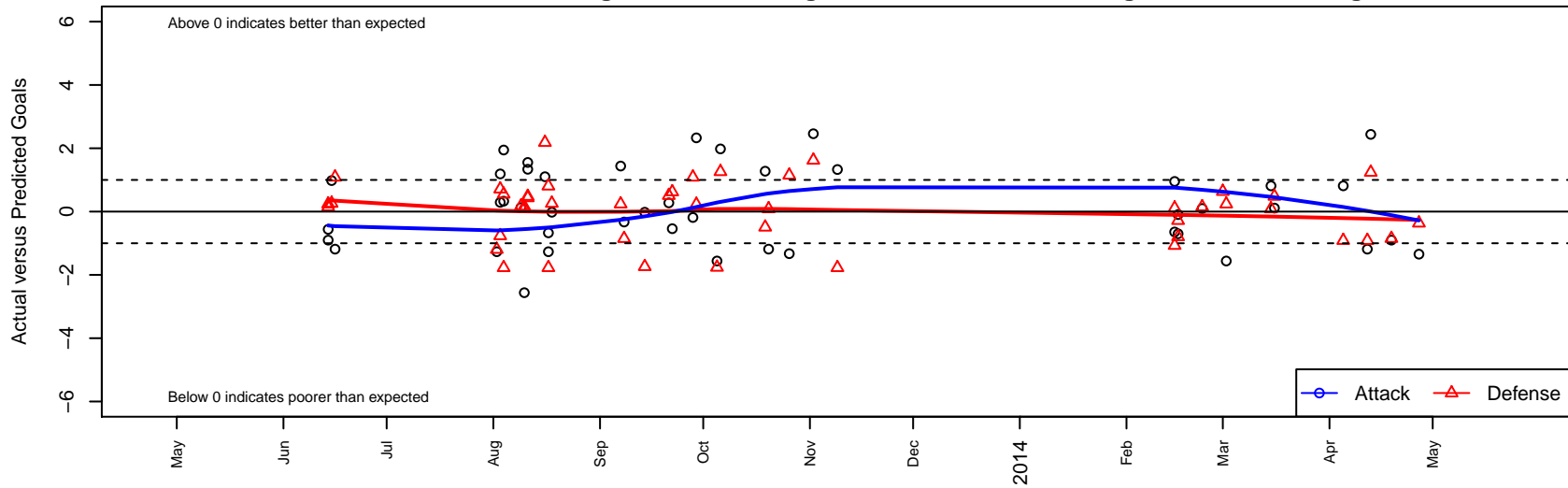
THUSC Element G01

Tualatin Hills United SC
 Tualatin Hills, OR
 G01 total strength=932
 attack=2.06 defense=1.21
 fall league = OPL National Premier League U12
 alt names used:
 THUSC Element G01
 THUSC Element

Venues played:
 United Cup U12
 Bend Premier Cup U12 Gold Deschutes U12
 Chinook Cup U12
 Mt Hood Challenge GU12 Premier
 OPL National Premier League U12
 Pacific Coast Super Cup U13
 Spr OPL Deschutes Division U12
 OPL State Cup U12



THUSC Element G01
 Dots are actual minus expected GF (blue circles) and GA (red triangles).
 Blue line is smoothed change in attack strength. Red is smoothed change in defense strength.



| | date | home | | away | | venue | pred.home | pred.awa |
|------|------------|-------------------------------------|---|-------------------------------------|----|---------------------------------|-----------|----------|
| 7810 | 2014-04-27 | PCU SESC Dynamite G01 | 1 | THUSC Element G01 | 2 | OPL State Cup U12 | 0.63 | 3.345 |
| 7741 | 2014-04-19 | THUSC Element G01 | 1 | Crossfire OR LOSC Storm G01 | 2 | OPL State Cup U12 | 1.90 | 1.149 |
| 7706 | 2014-04-13 | THUSC Element G01 | 4 | Crossfire OR WUSC Levante White G01 | 0 | OPL State Cup U12 | 1.56 | 1.239 |
| 7667 | 2014-04-12 | FC Portland Navy G01 | 3 | THUSC Element G01 | 0 | OPL State Cup U12 | 2.09 | 1.186 |
| 7583 | 2014-04-05 | FC Portland Navy G01 | 3 | THUSC Element G01 | 2 | Spr OPL Deschutes Division U12 | 2.09 | 1.186 |
| 7431 | 2014-03-16 | Crossfire OR OC Fusion G01 | 0 | THUSC Element G01 | 6 | Spr OPL Deschutes Division U12 | 0.48 | 5.889 |
| 7397 | 2014-03-15 | THUSC Element G01 | 2 | FC Portland Navy G01 | 2 | Spr OPL Deschutes Division U12 | 1.19 | 2.087 |
| 7239 | 2014-03-02 | THUSC Element G01 | 0 | Crossfire OR WUSC Levante White G01 | 1 | Spr OPL Deschutes Division U12 | 1.56 | 1.239 |
| 7186 | 2014-03-01 | PCU SESC Dynamite G01 | 0 | THUSC Element G01 | 10 | Spr OPL Deschutes Division U12 | 0.63 | 3.345 |
| 7148 | 2014-02-23 | THUSC Element G01 | 2 | Crossfire OR LOSC Storm G01 | 1 | Spr OPL Deschutes Division U12 | 1.90 | 1.149 |
| 1291 | 2014-02-16 | Kajumulo FC Farasi G00 | 1 | THUSC Element G01 | 3 | Pacific Coast Super Cup U13 | 0.72 | 3.095 |
| 1295 | 2014-02-16 | WPFC Fury Black G00 | 3 | THUSC Element G01 | 0 | Pacific Coast Super Cup U13 | 2.20 | 0.701 |
| 1251 | 2014-02-15 | Tynecastle FC G00 | 2 | THUSC Element G01 | 2 | Pacific Coast Super Cup U13 | 2.11 | 1.048 |
| 1257 | 2014-02-15 | LWPFC White Piranhas G00 | 5 | THUSC Element G01 | 0 | Pacific Coast Super Cup U13 | 3.93 | 0.644 |
| 3494 | 2013-11-09 | THUSC Element G01 | 3 | Eastside Timbers Red G01 | 3 | OPL National Premier League U12 | 1.67 | 1.228 |
| 3353 | 2013-11-02 | Washington Timbers Red G01 | 0 | THUSC Element G01 | 4 | OPL National Premier League U12 | 1.62 | 1.540 |
| 3192 | 2013-10-26 | THUSC Element G01 | 0 | Capital FC Timbers Red G01 | 1 | OPL National Premier League U12 | 1.33 | 2.149 |
| 3122 | 2013-10-20 | THUSC Element G01 | 0 | FC Portland Navy G01 | 2 | OPL National Premier League U12 | 1.19 | 2.087 |
| 3030 | 2013-10-19 | Westside Timbers Copa TS G01 | 2 | THUSC Element G01 | 3 | OPL National Premier League U12 | 1.51 | 1.724 |
| 5784 | 2013-10-06 | THUSC Element G01 | 3 | EMFC Cypress Blue G01 | 0 | OPL National Premier League U12 | 1.02 | 1.260 |
| 3684 | 2013-10-05 | Crossfire OR WUSC Levante White G01 | 3 | THUSC Element G01 | 0 | OPL National Premier League U12 | 1.24 | 1.561 |
| 3588 | 2013-09-29 | Eastside Timbers Red G01 | 1 | THUSC Element G01 | 4 | OPL National Premier League U12 | 1.23 | 1.671 |
| 3514 | 2013-09-28 | FC Portland Navy G01 | 1 | THUSC Element G01 | 1 | OPL National Premier League U12 | 2.09 | 1.186 |
| 3442 | 2013-09-22 | THUSC Element G01 | 1 | Washington Timbers Red G01 | 1 | OPL National Premier League U12 | 1.54 | 1.621 |
| 3381 | 2013-09-21 | THUSC Element G01 | 2 | Westside Timbers Copa TS G01 | 1 | OPL National Premier League U12 | 1.72 | 1.508 |
| 3214 | 2013-09-14 | THUSC Element G01 | 1 | EMFC Cypress Blue G01 | 3 | OPL National Premier League U12 | 1.02 | 1.260 |
| 3133 | 2013-09-08 | Capital FC Timbers Red G01 | 3 | THUSC Element G01 | 1 | OPL National Premier League U12 | 2.15 | 1.329 |
| 3061 | 2013-09-07 | THUSC Element G01 | 3 | Crossfire OR WUSC Levante White G01 | 1 | OPL National Premier League U12 | 1.56 | 1.239 |

| | date | home | | away | | venue | pred.home | pred.aw: |
|----|-------------|-------------------------------|----|-------------------------------------|---|---|------------------|-----------------|
| 52 | 2013-08-18 | EMFC Cypress Blue G01 | 1 | THUSC Element G01 | 1 | Mt Hood Challenge GU12 Premier | 1.26 | 1.020 |
| 59 | 2013-08-17 | THUSC Element G01 | 1 | Bend FC Timbers Red G01 | 0 | Mt Hood Challenge GU12 Premier | 2.27 | 0.805 |
| 95 | 2013-08-17 | THUSC Element G01 | 1 | Eastside Timbers Red G01 | 3 | Mt Hood Challenge GU12 Premier | 1.67 | 1.228 |
| 36 | 2013-08-16 | PacNW Maroon G01 | 0 | THUSC Element G01 | 2 | Mt Hood Challenge GU12 Premier | 2.18 | 0.898 |
| 71 | 2013-08-11 | THUSC Element G01 | 9 | WAFC Cobras G01 | 0 | Chinook Cup U12 | 7.66 | 0.435 |
| 72 | 2013-08-11 | PCU Red G01 | 0 | THUSC Element G01 | 5 | Chinook Cup U12 | 0.48 | 3.448 |
| 26 | 2013-08-10 | Crossfire OR LOSC Thunder G01 | 0 | THUSC Element G01 | 9 | Chinook Cup U12 | 0.16 | 20.809 |
| 30 | 2013-08-10 | THUSC Element G01 | 10 | PCU Black G01 | 0 | Chinook Cup U12 | 12.56 | 0.088 |
| 94 | 2013-08-09 | THUSC Element G01 | 10 | Crossfire OR SSC Storm G01 | 0 | Chinook Cup U12 | 9.87 | 0.166 |
| 46 | 2013-08-04 | THUSC Element G01 | 5 | Valley Futball Club Glory G01 | 0 | Bend Premier Cup U12 Gold Deschutes U12 | 3.05 | 0.549 |
| 48 | 2013-08-04 | THUSC Element G01 | 2 | Eastside Timbers Red G01 | 3 | Bend Premier Cup U12 Gold Deschutes U12 | 1.67 | 1.228 |
| 71 | 2013-08-03 | ISC Gunners A G01 | 0 | THUSC Element G01 | 3 | Bend Premier Cup U12 Gold Deschutes U12 | 0.71 | 1.810 |
| 73 | 2013-08-03 | Rocklin YSC Heat G01 | 1 | THUSC Element G01 | 3 | Bend Premier Cup U12 Gold Deschutes U12 | 0.24 | 2.708 |
| 38 | 2013-08-02 | Bend FC Timbers Red G01 | 2 | THUSC Element G01 | 1 | Bend Premier Cup U12 Gold Deschutes U12 | 0.80 | 2.267 |
| 49 | 2013-06-16 | FC Portland Navy G01 | 1 | THUSC Element G01 | 0 | United Cup U12 | 2.09 | 1.186 |
| 24 | 2013-06-15 | THUSC Element G01 | 2 | EMFC Cypress Blue G01 | 1 | United Cup U12 | 1.02 | 1.260 |
| 91 | 2013-06-14 | Crossfire OR LOSC Storm G01 | 1 | THUSC Element G01 | 1 | United Cup U12 | 1.15 | 1.902 |
| 93 | 2013-06-14 | THUSC Element G01 | 1 | Crossfire OR WUSC Levante White G01 | 1 | United Cup U12 | 1.56 | 1.239 |